

# ImpactECS version 7.1

## New Release Notes



**Release Date: December 2013**



Note: Any unreleased services or features referenced in this or other press releases or public statements are not currently available and may not be delivered on time or at all. Customers who purchase our services should make their purchase decisions based upon features that are currently available.

Last Updated: January 27, 2014

©Copyright 2014 3C Software. All rights reserved.

# Contents

- About the Release Notes ..... 4
- ImpactECS Enterprise Cost System version 7.1 ..... 4
- What’s New for Administrators ..... 4**
  - Unified Setup Application ..... 4
  - Support for Windows Domain Groups..... 4
  - Improved Status and Message Logs..... 4
  - Side-by-side ImpactECS version installations..... 4
  - Improved Database Naming Conventions ..... 5
- What’s New for Model Builders ..... 5**
  - Integrated Charts ..... 5
  - Improved Reporting Workflow ..... 6
  - New Report Designer ..... 6
  - New Report Types ..... 6
  - Dependent Picklists..... 6
  - Parallel Task Execution..... 6
  - Increased Character Limits for ImpactECS Item Names ..... 6
  - Form Events Pane ..... 6
  - Query Parameter Binding ..... 7
  - Creating Outlines ..... 7
- What’s New for Core Users ..... 7**
  - Performance Improvements over slow networks and VPN connections ..... 7
  - Query Drill-down Enhancements..... 7
  - Default Item Views..... 7
  - Drill-down for Impact Items..... 8
  - Advanced Grid Controls ..... 8
  - Multi-row Editing ..... 9
  - Copy and Paste Enhancements..... 9
  - Multi-item Views..... 9
  - Status Bar ..... 9
  - Text Wrap..... 10
- What’s New for Programmers ..... 10**

Support for Windows Azure SQL Databases .....	10
System Events .....	10
Client Actions .....	10
Script Debugging with Visual Studio .....	10
Export to Excel from Scripts .....	10

## About the Release Notes

This document describes many of the new features and enhancements in ImpactECS version 7.1 grouped by individual applications. When the software release is available, the online documentation will be updated with all of the new features added in this release including step-by-step instructions.

---

## ImpactECS Enterprise Cost System version 7.1

### What's New for Administrators

#### Unified Setup Application

The unified setup application allows ImpactECS administrators to distribute a single application to users to install the ImpactECS Server, Web Client and Desktop applications.

#### Support for Windows Domain Groups

ImpactECS supports Windows Domain groups which makes it possible for administrators to manage security and permissions for entire groups instead of managing each user separately.



#### Improved Status and Message Logs

With ImpactECS 7.1, detailed status and message logs are now written to database tables and are accessible to model administrators.

#### Side-by-side ImpactECS version installations

ImpactECS versions 6.5 and 7.x can run simultaneously on the same machine, allowing administrators to manage models in both environments during their upgrade process.

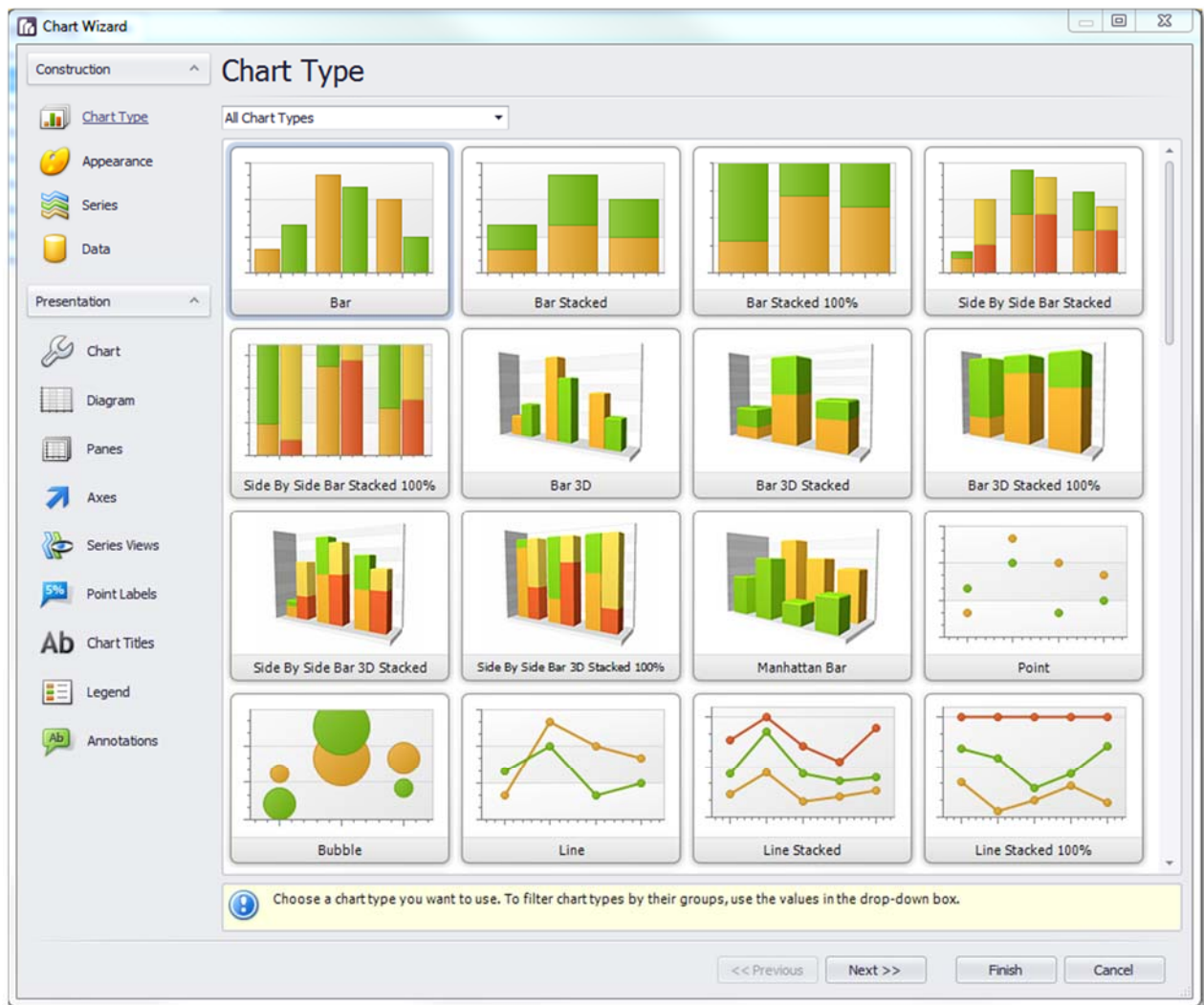
## Improved Database Naming Conventions

Database table names in ImpactECS have been standardized with the naming convention Impact[TableName] to make it easier to identify or isolate Impact tables within a database.

## What's New for Model Builders

### Integrated Charts

It's been said that a picture is worth a thousand words. In the new release of ImpactECS, a picture is worth a thousand numbers with the new integrated charting feature. You can now build a variety of charts without the need to export data to spreadsheets. Charts are stored in the Reports folder and can be created from many of the ImpactECS item types.



## Improved Reporting Workflow

Model builders can create and edit Reports directly from the Desktop Client. This new workflow mimics all other Impact item types and replaces the previous requirement to launch a separate application to create or edit reports. Additionally, this new workflow allows the Excel Add-In application to remain hidden and disabled when not in use.

## New Report Designer

The Desktop Client has a new integrated report designer for creating traditional or paper based reports. Integrating the report designer allows for the deprecation of the stand-alone Cost Report Designer application. This solution offers several benefits including ease-of-use, improved report rendering speeds and a more seamless workflow. Additionally, the new report designer supports advanced functionality like charts, sparklines and pivot grids.

## New Report Types

ImpactECS now supports four different Report types: (1) Legacy CRD reports for backwards compatibility, (2) Traditional Reports, (3) Excel Reports, and (4) Analytical Reports. Analytical Reports are Excel-based Reports that allow model builders to integrate features like charts, filters, and pivot tables.

## Dependent Picklists

Model builders can define the contents of a child picklist based on parameters selected in the parent list, limiting the available choices to those valid for the parent.

## Parallel Task Execution

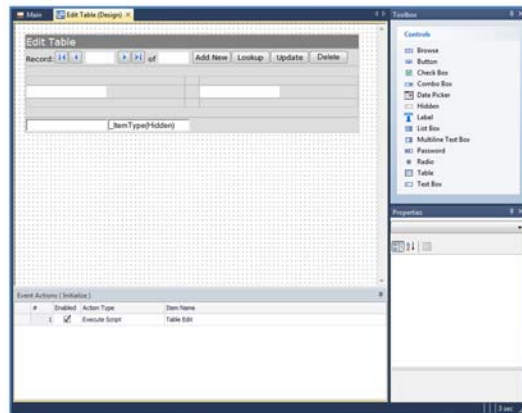
ImpactECS version 7.0 takes advantage of multi-core processing technology to simultaneously perform tasks or run calculations which substantially improves performance.

## Increased Character Limits for ImpactECS Item Names

Version 7.0 allows for item names longer than the former 31 characters. The default length maximum is 255 characters, but can be expanded beyond this limit if required.

## Form Events Pane

The Form events pane is now dockable on the Desktop Client so it is always visible when designing Forms.



### Query Parameter Binding

To improve usability and reduce redundant data entry, version 7.1 performs a factor search algorithm to pre-populate Query parameters.

### Creating Outlines

Similar to the Grid Grouping functionality, there is another simplified approach to create nested or indented data lists within ImpactECS.

## What's New for Core Users

### Performance Improvements over slow networks and VPN connections

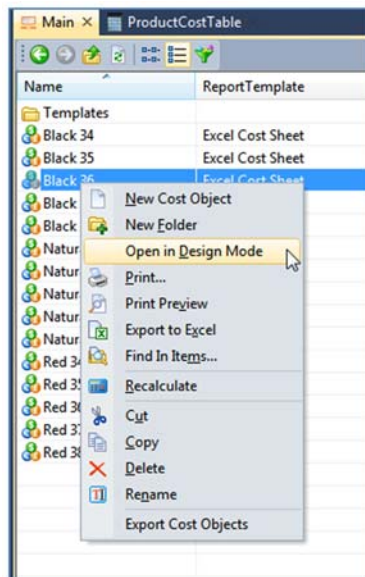
The Desktop Client has improved model navigation and load times when accessing remote servers over slow networks or VPN connections.

### Query Drill-down Enhancements

The Desktop Client now supports drill-downs that use the factor search algorithm to supply Query parameters values. This allows users to drill down into Queries that show relevant data based on their current context.

### Default Item Views

In an effort to streamline the user interface, ImpactECS Item Types now support a new default view that hides many of the elements used during model design. Items that support default views include Calculations, Cost Objects, Forms, Processes, Queries and Tables.



## Drill-down for Impact Items

The Desktop Client now supports drill-down capabilities for cells formatted with “Define Lists” that specify Impact items as their Source Type. This feature provides an alternate means of navigating Models to view detailed information behind individual cells.

## Advanced Grid Controls

Viewing, sorting, grouping and filtering information within ImpactECS has never been easier. With the newly developed grid controls, users have the ability to control how data is presented within a model.

### Grid Filtering

The Desktop Client now supports the ability to show and hide specific grid rows based on user-defined conditions on any view. This feature is similar to the “Auto Filter” functionality in Microsoft Excel.

### Grid Sorting

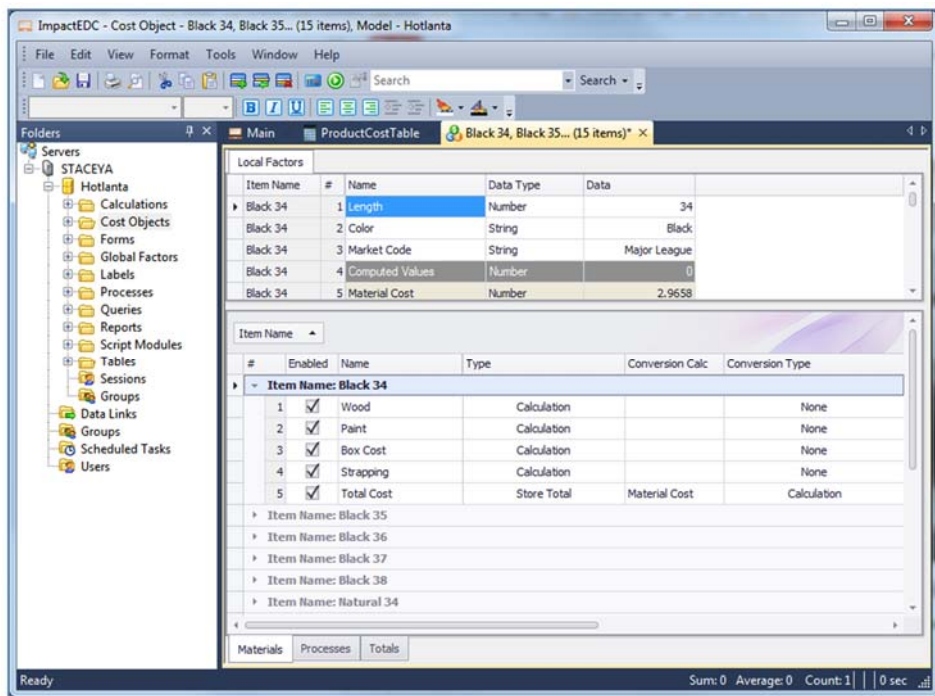
Users can sort or reorder data contained in their Impact Items by the values in each individual column or multiple columns.

### Grid Search

The new grid search box on the Desktop Client allows users to perform a universal search within items for specific keywords or terms.

### Grid Grouping

Users can group data by grid columns to streamline data views on the Desktop Client. This feature is similar to the “Group” functionality in Microsoft Excel where grouped rows can expand/collapse by clicking the arrow next to the group header.





## Multi-row Editing

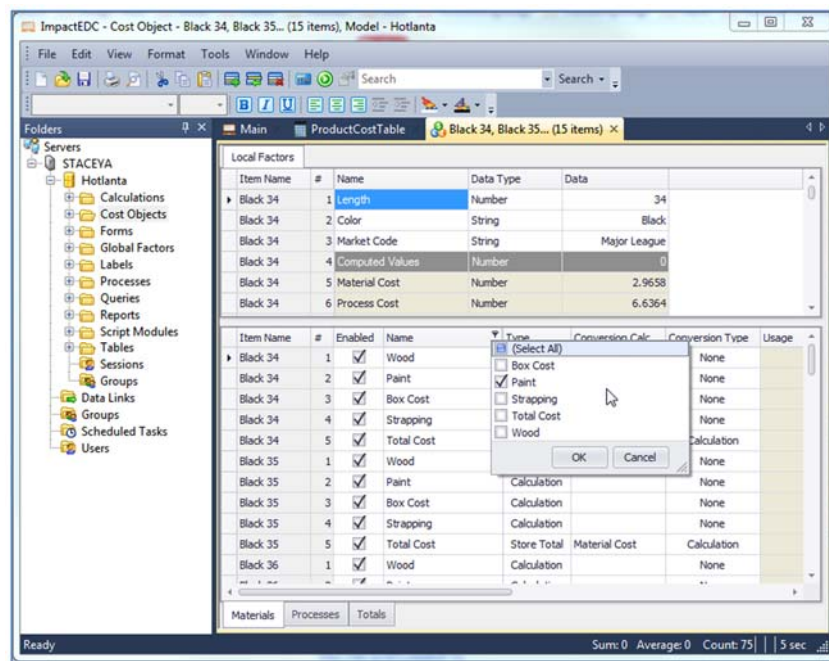
Similar to the “Fill Down” feature on Microsoft Excel, users can enter the same data in multiple cells with the new multi-row editing feature.

## Copy and Paste Enhancements

Improved copy and paste functionality makes it easier to enter data onto the grid. Now, rows are automatically appended to handle the amount of data pasted on the grid and it’s no longer necessary to highlight all of the cells before pasting data on the grid.

## Multi-item Views

With version 7.1, users can open multiple items in a single screen which saves time when editing data that exists in separate items or comparing data between items.



## Status Bar

Users can now view aggregate information on the status bar when a group of cells is highlighted to aid with quick data validation. Stats available include sum, average, and count of cells highlighted.

#	Enabled	Name	Type	Conversion Calc	Conversion Type	Usage	Waste	Work Loss	Total Materials
1	<input checked="" type="checkbox"/>	Wood	Calculation		None	1.9833	0.2333	0.1167	2.3333
2	<input checked="" type="checkbox"/>	Paint	Calculation		None	0.5000	0.0000	0.0000	0.5000
3	<input checked="" type="checkbox"/>	Box Cost	Calculation		None	0.0700	0.0000	0.0000	0.0700
4	<input checked="" type="checkbox"/>	Strapping	Calculation		None	0.0625	0.0000	0.0000	0.0625
5	<input checked="" type="checkbox"/>	Total Cost	Store Total	Material Cost	Calculation	2.6158	0.2333	0.1167	2.9658

Materials Processes Totals

Sum: 5.93166666428248 Average: 1.1863333328565 Count: 5 | 2 sec

## **Text Wrap**

Cells now automatically expand to the appropriate height to accommodate the text entered when the Text Wrap function is enabled for a cell.

## **What's New for Programmers**

### **Support for Windows Azure SQL Databases**

ImpactECS now supports Windows Azure Database installations for cloud based SQL databases.

### **System Events**

New system events allow programmers to perform custom logic when the following actions occur within their ImpactECS models: OnSaveItems, OnSaveItemAs, OnBeforeDeleteItem, OnAfterDeleteItem, OnBeforeDeleteFolder, OnAfterDeleteFolder, OnOpenModel, OnCreateModel, Confirm, OnTaskStarted, OnTaskFinished, OnLogMessage.

### **Client Actions**

New client actions let programmers perform the following actions on the Desktop Client: Refresh, OpenURL, OpenItem, PrintTempFile, PrintFile, and OpenTempFile.

### **Script Debugging with Visual Studio**

Programmers can now use Visual Studio to debug their ImpactECS Script Modules. Simultaneous debugging with different users on a shared model is not currently supported.

### **Export to Excel from Scripts**

Users can now trigger the "Export to Excel" function from a Script Module.